



WORLD TOUR
2019

Level 2: FME 2019 Scenarios

FME Desktop



AGENDA

Help the FME Lizard find a new office!

- Mission 1:
 - Find how many FME Users are in each city
- Mission 2:
 - Find which city is warm and dry
- Mission 3:
 - Find which city has the most vegetation
- Mission 4:
 - Find Zipster
- Choose the office Demo
- FME Highlights

START

The FME Lizard is on the Move!

But where should its next office be?

FME to the Rescue!

Let's build a workspace to help the FME Lizard find a new office.
(Caveat: the FME Lizard is picky and has very specific needs.)



The FME Lizard is on the Move!

But where should its next office be?

FME to the Rescue!

Let's build a workspace to help the FME Lizard find a new office. (Caveat: the FME Lizard is picky and has very specific needs.)



FME Lizard's New Office: Location Selection Criteria

1. FME Lizard likes FME users and wants them nearby.
2. Warm and dry.
3. Fresh supply of vegetation.
4. FME Zipster sightings.





May the best city win

- Generate index ranking all FME World Tour cities.
- You can game the system by assigning a weight to the indexes.
- Vote at fme.ly/wtvote now!

Index 0-1 for
each World Tour
city

Weight each
index 0-100%,
must add up to
100%

You vote on these! Try to improve your city's ranking by increasing the weight for criteria that fit your city.

FME users

*

Weight

=

Weighted

+

Warm and dry

*

Weight

=

Weighted

+

Vegetation

*

Weight

=

Weighted

+

Zipster sightings

*

Weight

=

Weighted

fme.ly/wtvote

=

Final index

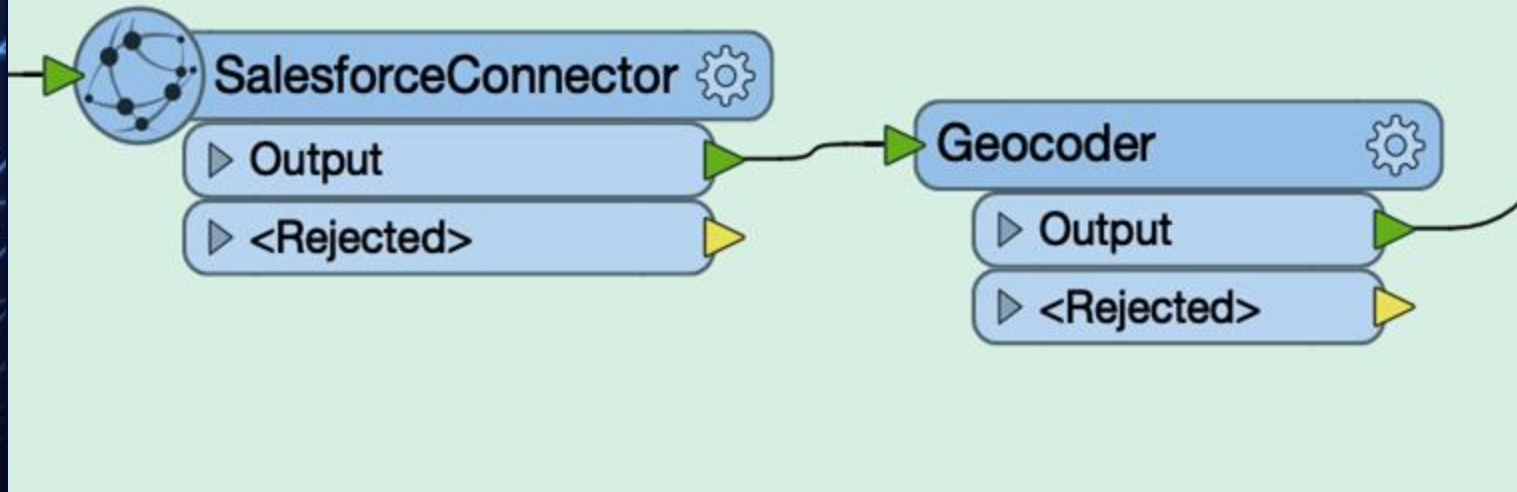


WT City	Ranking	Change
Vancouver	1	+3
Bonn	2	+1
...

Mission 1

How many FME Users are in
each city?





A map of North America showing the United States and Canada. Numerous blue circular markers are scattered across the landmasses. A white popup box is open over a marker on the west coast of Canada. The popup contains the following text: City: Vancouver, Country: Canada, Date: June 12, 2019, Host: Safe Software, Population: 600000, Users: 1026, PercentageOfFMers: 0.17099999999999999, id: Cities10. The popup has a close button (X) in the top right corner. On the left side of the map, there are three vertical buttons: a plus sign (+), a minus sign (-), and a button with the number 3.

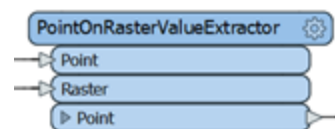
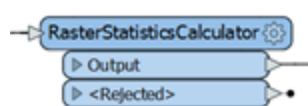
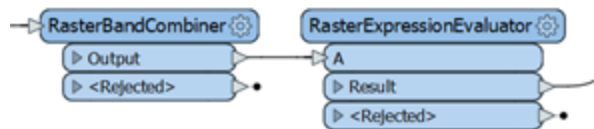
City: Vancouver
Country: Canada
Date: June 12, 2019
Host: Safe Software
Population: 600000
Users: 1026
PercentageOfFMers: 0.17099999999999999
id: Cities10

Mission 2

Which city is warm and dry?



Fick, S. E., & Hijmans, R. J. (2017). WorldClim 2: new 1-km spatial resolution climate surfaces for global land areas. *International Journal of Climatology*, 37(12), 4302-4315.



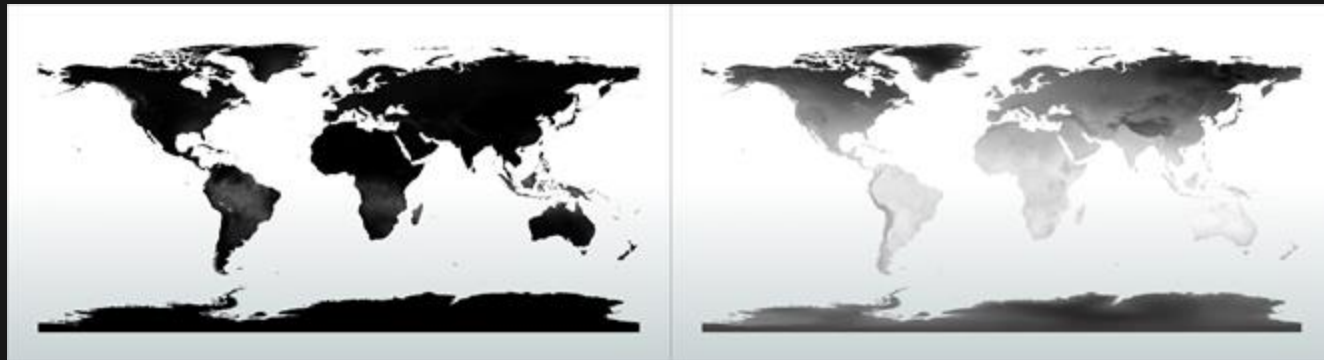
average =



Annual
average for
each city

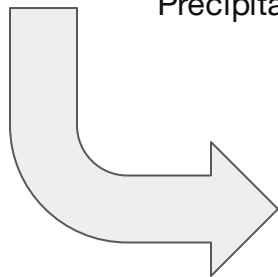
Cities





Precipitation raster

Temperature raster



Warm and dry index

Lizard_Habitat [CSV2] - CSV Columns...

	City	Country	Date	Host	Population	precip_norm	temp_norm	Habitat Index
1								
2								
3								
4								
5								
6								
7								
8								
9								
10								

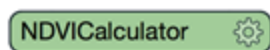
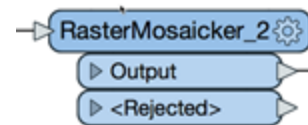
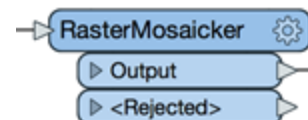
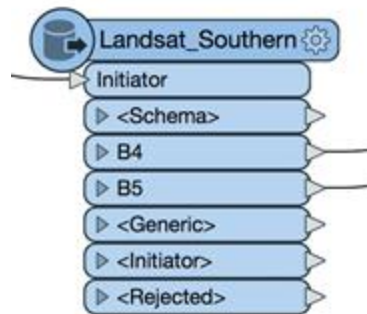
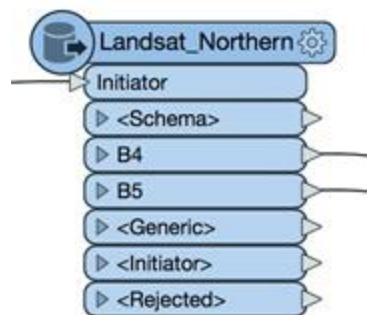
75 row(s)



Mission 3

What city has lots of
vegetation?



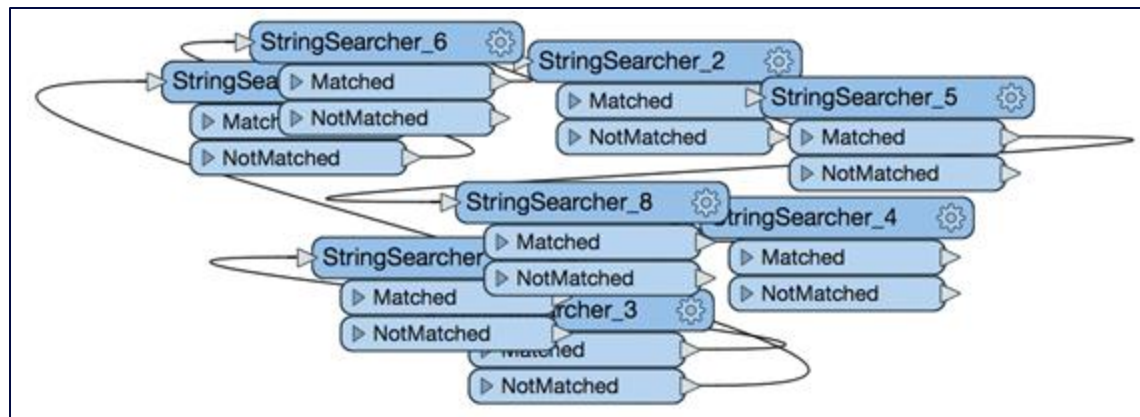
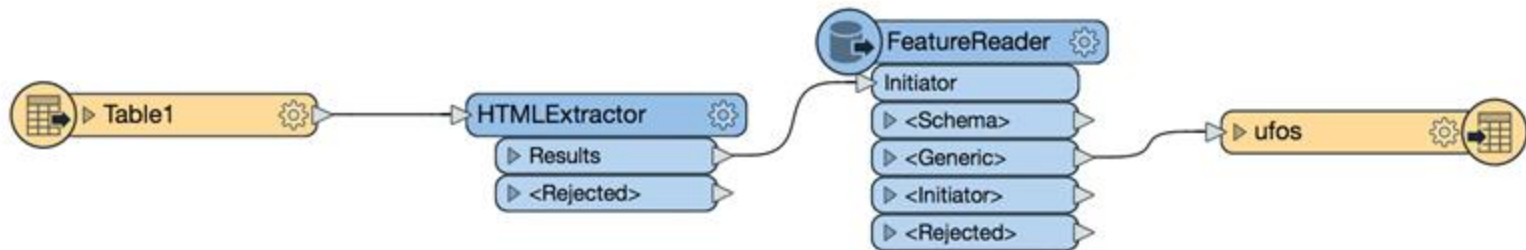




Mission 4

Where is Zipster?









Checkpoint

Over to  Workbench





Demo Recap

- Integrated multiple sources
- Transformation tips and tricks:
 - Feature Caching and Partial Runs
 - Visual Preview
 - Bookmarks and Annotations
 - Database and Web Connections
 - FeatureReader and FeatureWriter
- Displayed data in a friendly way



FME 2019 Highlights

Performance

“EVERY FME RELEASE WILL BE **FASTER THAN THE PREVIOUS** OR WE WON’T SHIP IT!”

Dale Lutz / Don Murray
2018+





FME 2019: The Interface

Dark Mode

The screenshot displays the QGIS interface in dark mode. At the top, a **FeatureTypeFilter** node is visible, with options for **MONUMENTS**, **CCMRIVERS**, **<Blank>**, and **<Unfiltered>**. Below this, the **Visual Preview (beta)** panel shows a table of data for **FeatureTypeFilter_CCMRIVERS**. The table has columns: **TNODE**, **LENGTH**, **RIVERS_LIN**, **RIVERS_L_1**, **SHAPE_LEN**, and **GID**. The **Graphics** panel on the right shows a map of France with a red rectangle highlighting a specific area. The map includes labels for **FRANCE**, **AVEYRON**, **MARSA**, **SSANDRIA**, and **Milano**. The map is credited to **Stamen Design** and **OpenStreetMap**.

	TNODE	LENGTH	RIVERS_LIN	RIVERS_L_1	SHAPE_LEN	GID
1	36755	382.843	36668	1	382.84	0
2	36809	241.421	36669	2	241.419	0
3	36737	582.843	36678	3	582.841	0
4	36756	1365.68	36679	2	1365.68	0
5	36820	941.421	36680	2	941.421	0
6	36776	624.264	36681	2	624.263	0
7	36821	2389.95	36682	4	2389.95	0
8	36818	100	36690	2	100.003	0
9	36831	200	36691	1	199.998	0
10	36600	1531.27	36692	2	1531.27	0

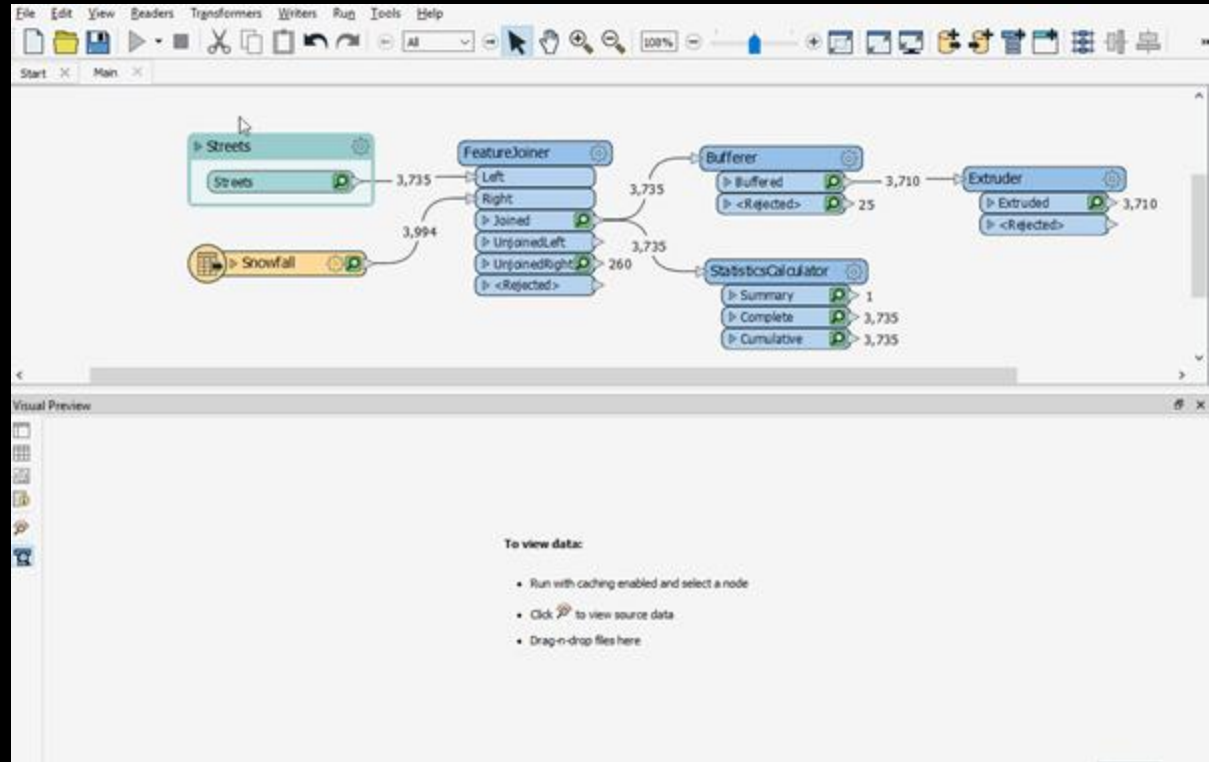
Visual Preview (beta)
Table
FeatureTypeFilter_CCMRIVERS
Columns...

Graphics
2D 3D Slideshow Print Select Pan Zoom In Zoom Out Zoom Fullscreen

FRANCE
AVEYRON
MARSA
SSANDRIA
Milano
Stamen Design CC BY 3.0 OpenStreetMap

X: -14.1637 Y: 45.5529 _LL-WGS84_0 DEGREE

Visual Preview

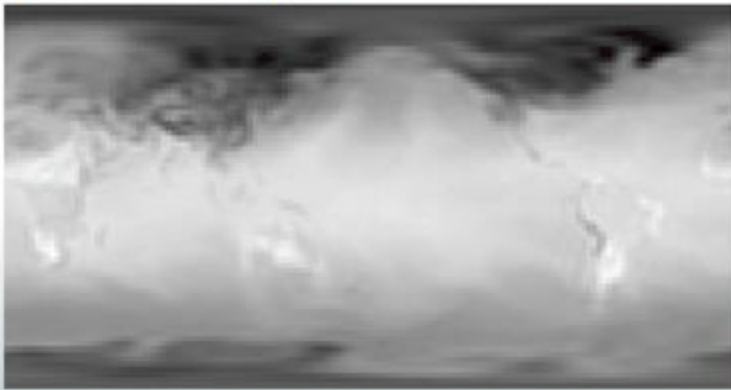


Animate Mode

Visual Preview (beta)

Graphics

Background map off



4 / 516

X: 368.2464 Y: -95.3232 Unknown Coordinate System Unknown Units

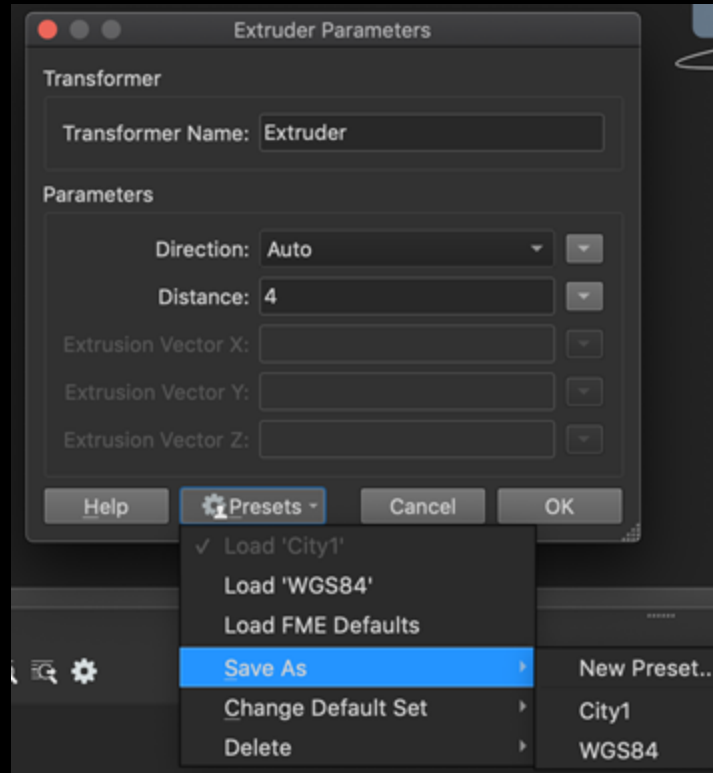
Visual Preview (beta) Translation Log

Feature Information

Property	Value
Feature Type	RasterBandSeparator_OUTPUT
Coordinate System	Unknown
Dimension	2D
Number of Vertices	5
Min Extents	-1.25, -91.25
Max Extents	358.75, 91.25
▼ Attributes (601)	
_band_ind...	3
_raster_ind...	0
base_date(0) (...)	2003
base_date(1) (...)	1
base_date(2) (...)	1
description (string)	Data is from NMC initialized reanalysis (4x/day). These are the 0.9950 sigma...
fme_basena...	air.sig995.2005
fme_feature_ty...	NETCDF
fme_geomet...	fme_aggregate
fme_type (string)	fme_raster
multi_reader_ful...	0
multi_reader_...	0
multi_reader_ke...	NETCDF_1
multi_reader_ty...	NETCDF

Features Selected: 4 of 516

Save Parameter Presets



Tester transformer

Tester Parameters

Transformer

Transformer Name:

Test Clauses

Logic	Left Value	Operator	Right Value
	← _element_co...	=	<input type="checkbox"/> 0
AND	← display_meta	In	<input type="checkbox"/> (1,2)

+ - ▲ ▼ ≡ ≠ | ✂ 📄 📋

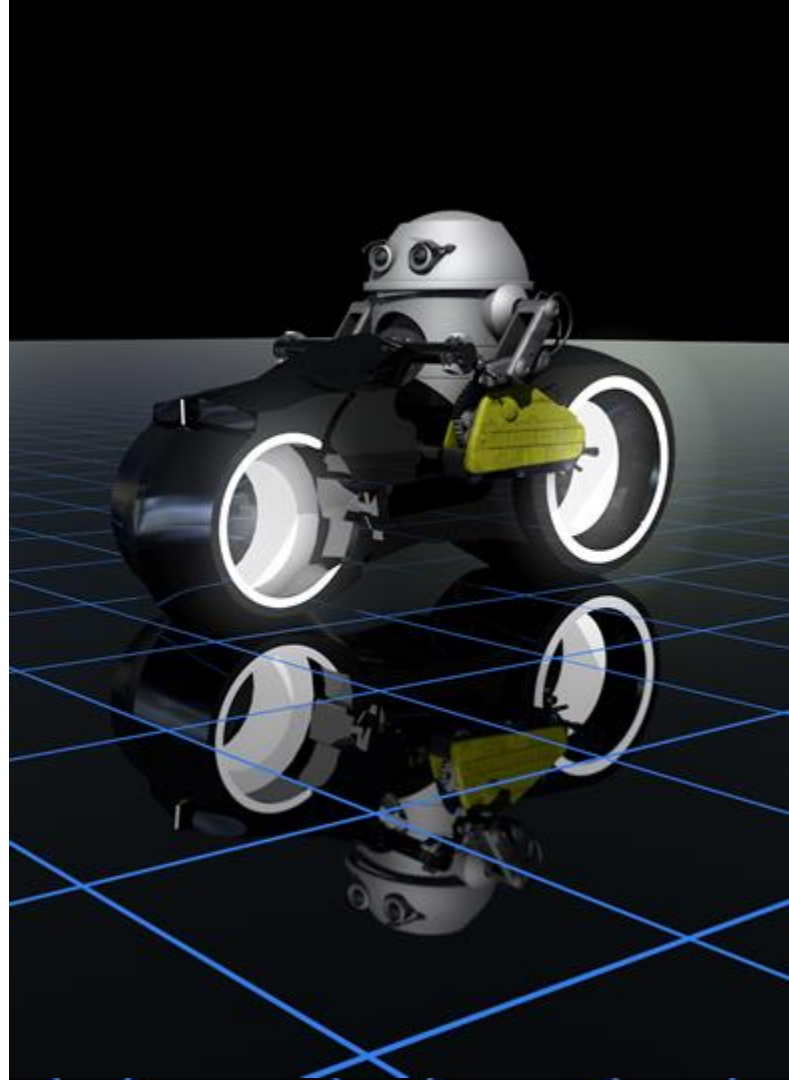
Comparison Mode:

[illegible]

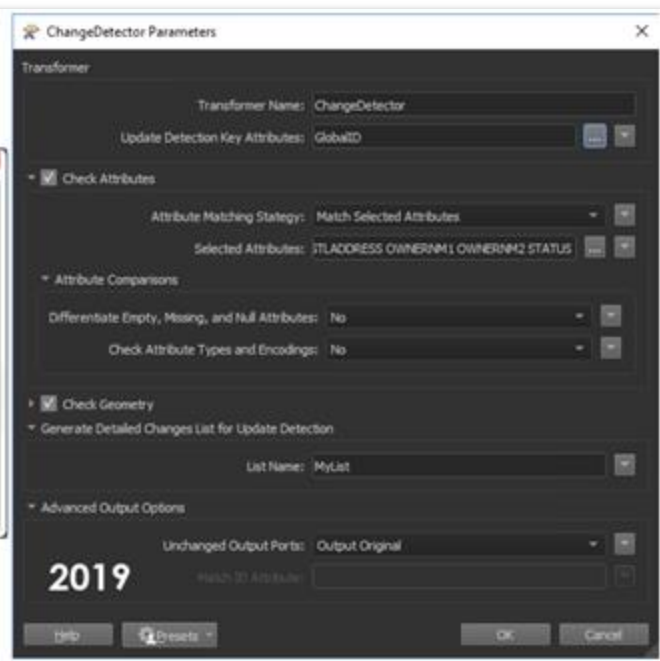
New in 2019

More New Format Support

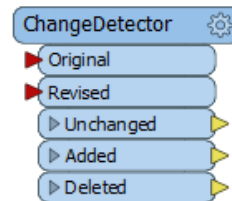
- Azure Storage Connectors
- Cesium Ion Connector
- Cityworks Connector
- Compressed File Reading (.rar/.gz/.tgz/.zipx)
- DGN Meshes
- Digital Weather Markup Language (DWML) Reader
- FME Augmented Reality (AR) Reader
- Garmin POI Reader/Writer
- Google Storage Connectors
- OGC Web Coverage Service (WCS) Reader
- TopoJSON Writer



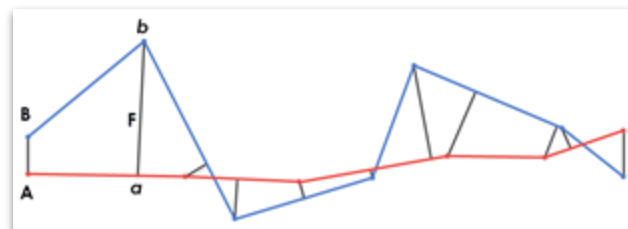
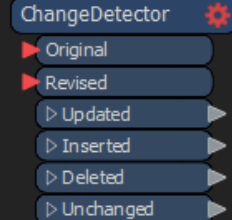
ChangeDetector



2018



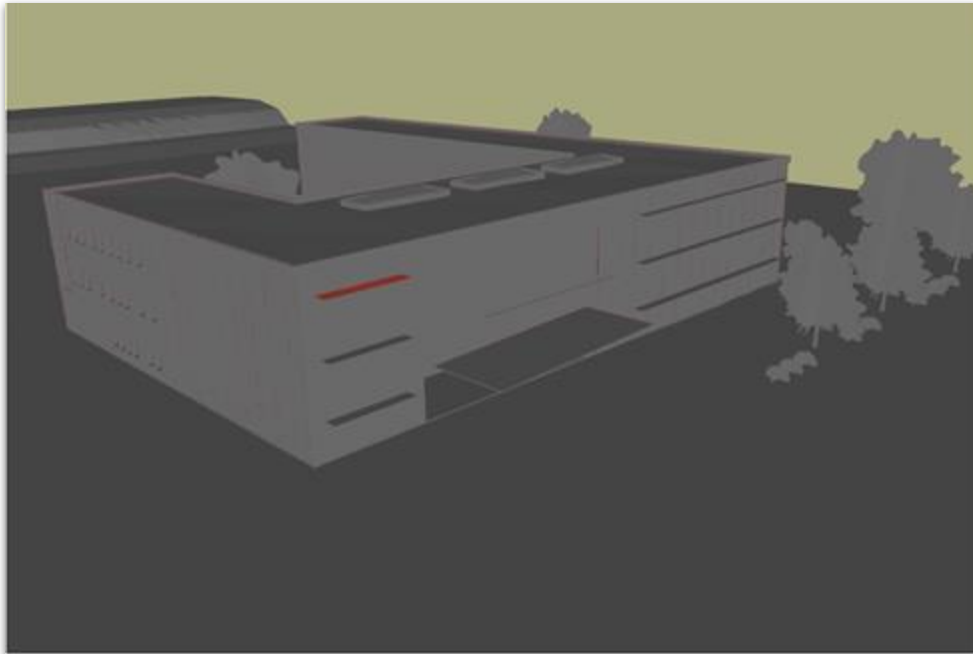
2019



Decompression



Native Revit Reading



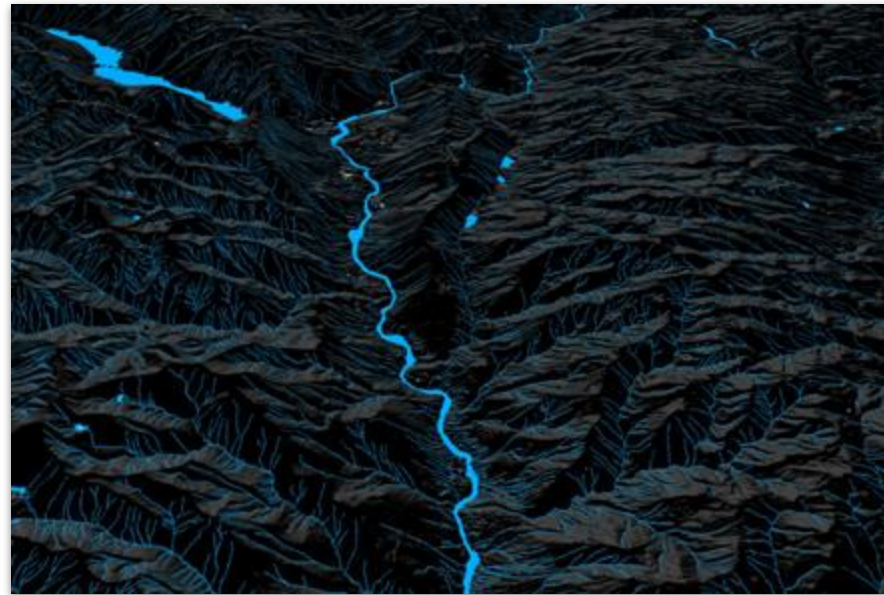
Property	Value
Attributes (39)	
AnalysesAs (32 bit integer)	3
BaseCategory (string)	Floors
Bottom (64 bit real)	33.25885826771635
BuildingLevel (encoded: UTF-8)	03 - Floor
BuildingLevelElevation (64 bit real)	24.934383202099546
BuildingLevelStory (string)	Yes
BuildingLevelRoomOffset (64 bit real)	3.9370078740157473
Category (string)	Floors
CreatedPhase (encoded: UTF-8)	New Construction
Discipline (string)	Architectural
DocUpdate (string)	20190221192333
DocVer (string)	Autodesk Revit 2018 (Build: 20170223_1515x64)
Dummy (boolean)	No
ElementType (encoded: UTF-8)	Floor
Family (encoded: UTF-8)	Floor
FamilyType (encoded: UTF-8)	Metal Sunscreen
fme_basename (string)	Technical_school-Modern
fme_feature_type (string)	ArchitecturalFloors
fme_geometry (string)	fme_aggregate
fme_type (string)	fme_solid
Function (string)	Interior
IdentityData.AssemblyCode (encode...	B1010
IdentityData.AssemblyDesc (encode...	Floor Construction
IdentityData.Comments (encoded: UTF-8)	Third floor sunscreen for temperature regulation
IdentityData.Mark (encoded: UTF-8)	G96
IdentityData.Omniclass (encoded: UTF-8)	Floor Construction
IdentityData.OmniclassDesc (encode...	Floor Construction
InExteriorShell (string)	no
Length (64 bit real)	-1e+30
Locked (boolean)	No
Moribund (boolean)	No
multi_reader_full_id (32 bit integer)	0
multi_reader_id (32 bit integer)	0
multi_reader_keyword (string)	REVITNATIVE_1

Features Selected: 1 of 1

DGN Mesh Reading



Esri i3s



TopoJSON

DWML_(R)

Socrata
(New API)

OGC WGS_(R)

Garmin POI
Binary_(R)

FME AR_(R)

New Connectors

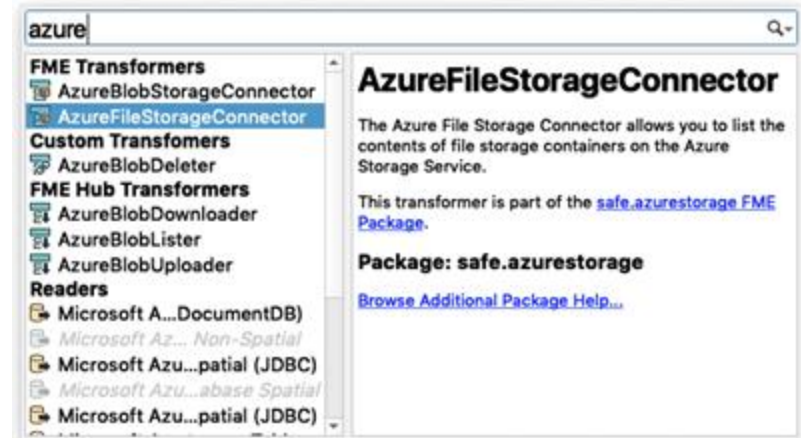
- AzureBlobStorageConnector
- AzureFileStorageConnector
- CesiumIonConnector
- CityworksConnector
- GoogleCloudStorageConnector
- S3Connector
- AzureQueueStorageConnector (*coming soon*)
- KafkaConnector (*coming soon*)
- TrelloConnector (*coming soon*)



FME Packages

Delivering transformers, reader/writers, and connections to you **faster**.

- Zipped *.fpkg* files available via [FME Hub](#).
- Get fixes and new features into your hands within hours, not months.
- Developers can contribute their own content to FME.
- Currently released as FME Packages:
 - S3Connector
 - CesiumIonConnector
 - RasterObjectDetector series
 - NLP series



New Machine Learning Transformers

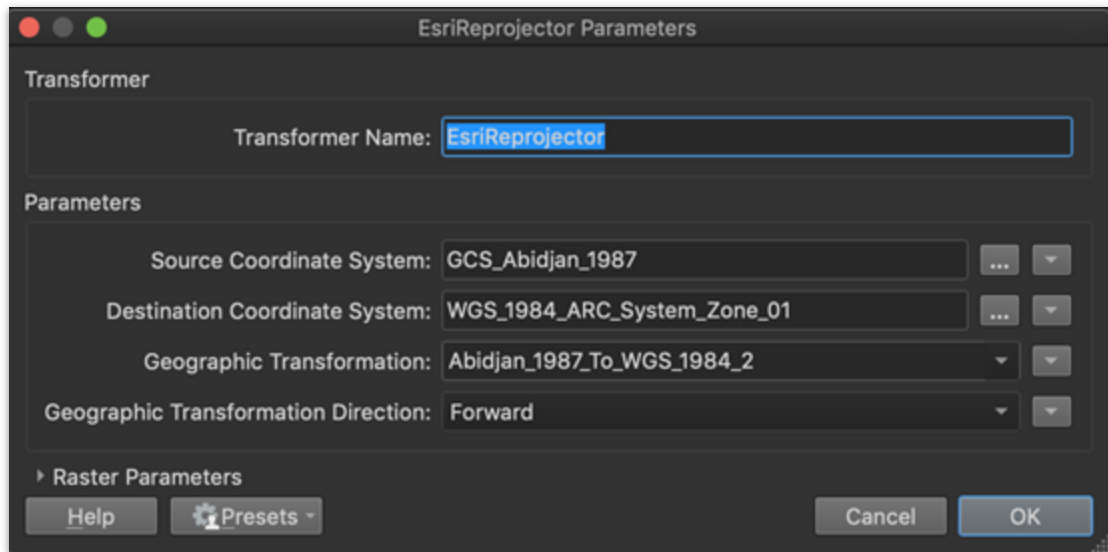
- RasterObjectDetector
- RasterObjectDetectorTrainer
- NaturalLanguageProcessor

Inspector [FFS] - NLPClassifier_LabelledText	
Text	_nlp_label
1 The Lawlors finally got some satisfaction...	English
2 CARTO is a cloud-based location intellig...	English
3 Nous avons visité l'Abbaye en novembre...	French
4 Vous êtes au volant d'une voiture et vou...	French



EsriReprojector

- Not new, but rewritten to not use ArcObjects
- Bundled on all platforms
- Does not need ArcGIS installed



THE END



Questions?

Now let's take a look at FME Server...